



EUROPEAN  
COMMISSION

Community research

# FP7-SME-2008-1 Research for SMEs



SEVENTH FRAMEWORK  
PROGRAMME



CAPACITIES





EUROPEAN  
COMMISSION

Community research

# FP7-SME-2008-1 Research for SMEs

- Call deadline: 11/04/2008
- Indicative budget: € 92.7 Million → € 100 Million
- Call coordinator: German Valcarcel
- Number of proposals submitted: 673
- Num. of ineligible proposals: 10
- Num. of proposals to be evaluated: 663
- Total Num. of participants : 5633





EUROPEAN  
COMMISSION

Community research

# Overview of the evaluation

11/04/2008

**Reading and  
Individual Assessment**

**Consensus  
meetings**

**Panel  
Review**

13 – 30 May

9-17 June

18-19 June

673 proposals submitted

663 eligible proposals





EUROPEAN  
COMMISSION

Community research

# Results of the Evaluation (1)

Number of Proposals					
EVALUATED		RANKED LIST		Success Rate (%)	Reserve List
Total	%	Total	%	%	
663	100.00%	98	100.00%	14.8%	20





EUROPEAN  
COMMISSION

Community research

## Results of the Evaluation (2)

Num. of proposals that have passed all threshold	Num. of proposals that have failed any of the thresholds	Total
267	396	663





EUROPEAN  
COMMISSION

Community research

## Results of the Evaluation (3)

Score $\geq 13$	Score = 12.5	$11 \leq \text{Score} \leq 12$	Failed to meet any of the thresholds	Total
98	35	134	396	663

→ cut-off score = 13





EUROPEAN  
COMMISSION

Community research

## Results of the Evaluation (4)

<b>Main List</b>	<b>Reserve List</b>	
<b>Score <math>\geq</math> 13</b>	<b>Score = 12.5</b>	<b>Total</b>
<b>98</b>	<b>20</b>	<b>118</b>





EUROPEAN  
COMMISSION

Community research

# Resubmissions

<b>Previous Call</b>	<b>Number of Proposals</b>	<b>Retained for funding</b>	<b>Success rate</b>
FP7-ICT-2007-1	1	0	0.00%
FP7-ICT-2007-2	2	0	0.00%
FP7-NMP-2007-LARGE-1	3	0	0.00%
FP7-SME-2007-1	188	36	19.15%
FP7-SME-2007-2	2	1	50.00%
<b>Total</b>	<b>196</b>	<b>37</b>	<b>18.88%</b>



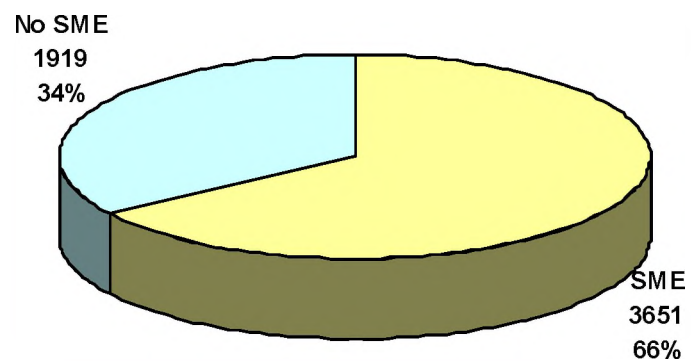


EUROPEAN  
COMMISSION

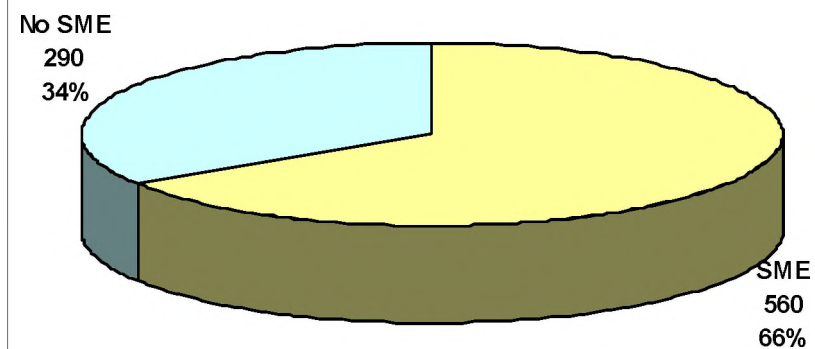
Community research

# SME participants

SMEs (Proposals)



SMEs (Main List)



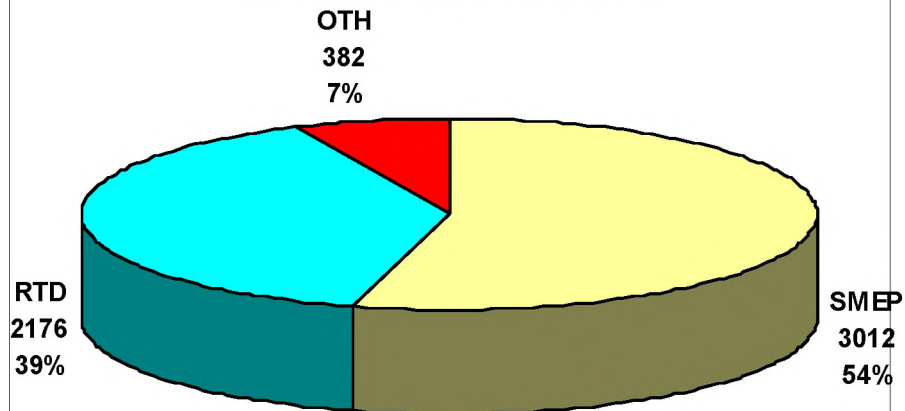


EUROPEAN  
COMMISSION

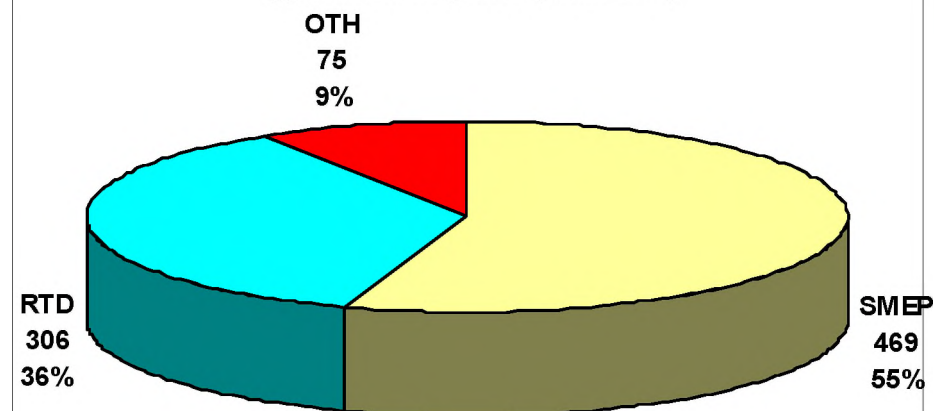
Community research

# Type of participant

Type of Participants (Proposals)



Type of Participants (Main List)

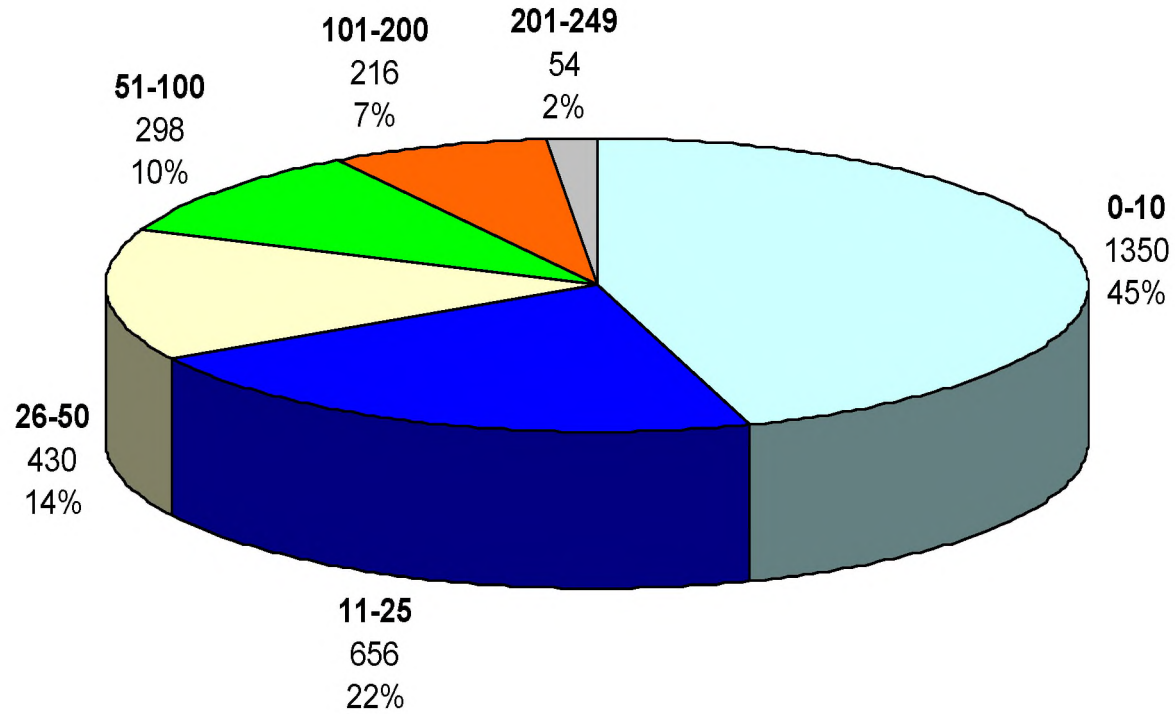




EUROPEAN  
COMMISSION

Community research

### Distribution of SMEP by Number of Employees in Submitted Proposals

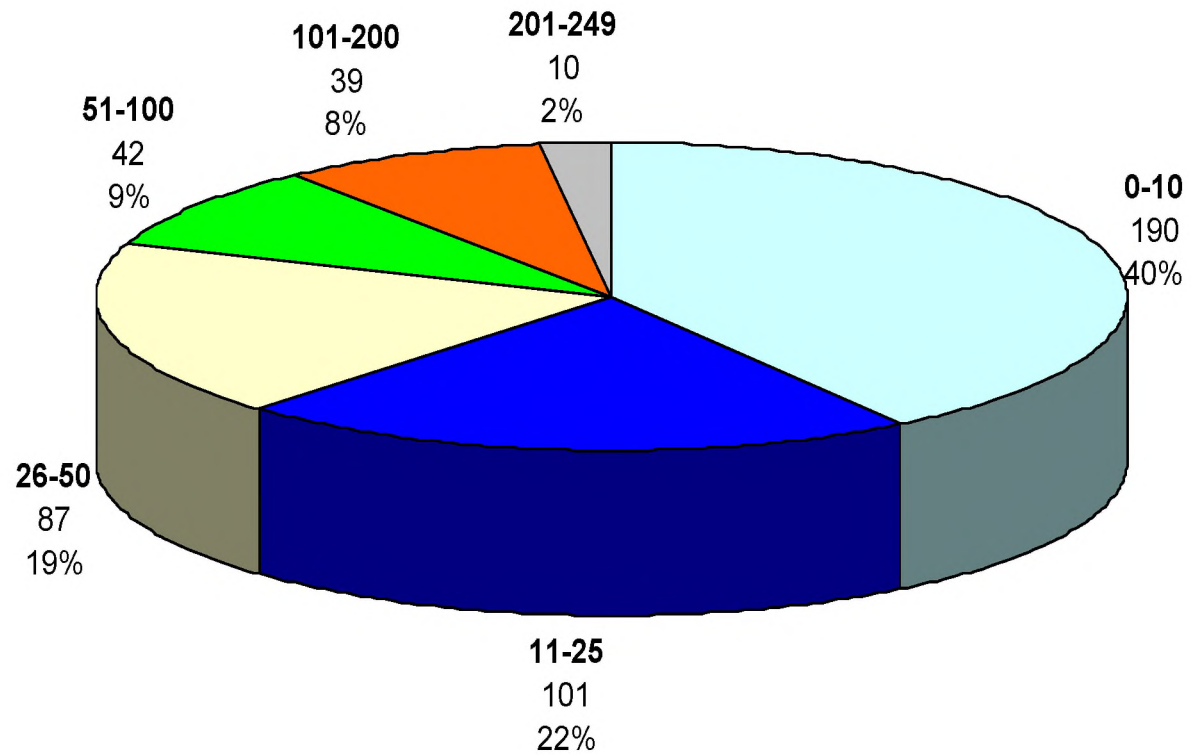




EUROPEAN  
COMMISSION

Community research

### Distribution of SMEP by Number of Employees in Proposals Retained for Funding



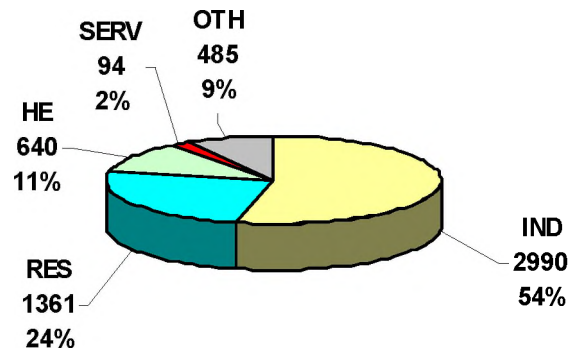


EUROPEAN  
COMMISSION

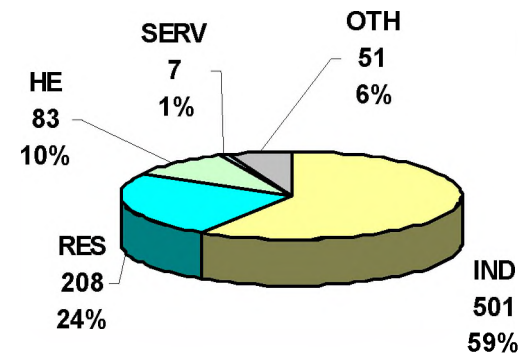
Community research

# Type of Activity

Type of Activity (Proposals)



Type of Activity (Main List)





EUROPEAN  
COMMISSION

Community research

# Number of SME Coordinators

Proposals Evaluated			Retained for Funding			Success Rate	
Total Num of Coordinators	SME Coordinators	% SME Coordinators	Total Num Coordinators	Total SME Coordinators	% SME Coordinators	All Coordinators	SME Coordinators
663	468	70.6	98	84	85.7	14.8	17.9





EUROPEAN  
COMMISSION

Community research

Country	Number of Participants in Submitted Proposals	Number of Participants in Proposals Retained for Funding	Success Rate (%)	
AT	Austria	168	15	8.93%
BE	Belgium	101	14	13.86%
BG	Bulgaria	89	8	8.99%
CY	Cyprus	68	9	13.24%
CZ	Czech Republic	83	7	8.43%
DE	Germany	581	94	16.18%
DK	Denmark	123	24	19.51%
EE	Estonia	68	9	13.24%
ES	Spain	705	105	14.89%
FI	Finland	65	12	18.46%
FR	France	286	52	18.18%
GR	Greece	312	40	12.82%
HU	Hungary	112	14	12.50%
IE	Ireland	69	19	27.54%
IT	Italy	618	75	12.14%
LT	Lithuania	54	11	20.37%
LU	Luxembourg	4	1	25.00%
LV	Latvia	36	3	8.33%
MT	Malta	24	2	8.33%
NL	Netherlands	199	31	15.58%
PL	Poland	183	21	11.48%
PT	Portugal	144	19	13.19%
RO	Romania	104	13	12.50%
SE	Sweden	134	19	14.18%
SI	Slovenia	82	4	4.88%
SK	Slovakia	41	6	14.63%
UK	United Kingdom	706	135	19.12%
	Totals	5159	762	14.77%

## Participations by Country Member States





EUROPEAN  
COMMISSION

Community research

## Participations by Country – Associated Countries

Country		Number of Participants in Submitted Proposals	Number of Participants in Proposals Retained for Funding	Success Rate (%)
AL	Albania	2	0	0.00%
BA	Bosnia and Herzegovina	1	0	0.00%
CH	Switzerland	84	21	25.00%
HR	Croatia	40	8	20.00%
IL	Israel	27	3	11.11%
IS	Iceland	13	2	15.38%
LI	Liechtenstein	2	0	0.00%
ME	Montenegro	1		0.00%
MK	Former Yugoslavian Republic of Macedonia	11	0	0.00%
NO	Norway	144	33	22.92%
RS	Serbia	20	2	10.00%
TR	Turkey	74	7	9.46%
Totals		419	42	10.02%





EUROPEAN  
COMMISSION

Community research

## Participations by Country Third Countries

Country		Number of Participants Submitted Proposals	Number of Proposals Retained for Funding	Number of Participants in	Success Rate (%)
AE	United Arab Emirates	1	1	1	100.00%
AF	Afghanistan	1	0	0	0.00%
AN	Netherlands Antilles	1	1	1	100.00%
AU	Australia	1	1	1	100.00%
AZ	Azerbaijan	1	0	0	0.00%
BY	Belarus	2	0	0	0.00%
CL	Chile	2	0	0	0.00%
CN	China	3	1	1	33.33%
DZ	Algeria	2	0	0	0.00%
EG	Egypt	3	1	1	33.33%
ID	Indonesia	1	0	0	0.00%
IN	India	1	0	0	0.00%
JO	Jordan	2	1	1	50.00%
KR	Republic of Korea	1	0	0	0.00%
MA	Morocco	1	0	0	0.00%
MD	Moldova	2	2	2	100.00%
NG	Nigeria	1	1	1	100.00%
RU	Russian Federation	10	0	0	0.00%
SY	Syrian Arab Republic	1	0	0	0.00%
TN	Tunisia	5	1	1	20.00%
TW	Taiwan	1	0	0	0.00%
UA	Ukraine	6	0	0	0.00%
US	United States	2	0	0	0.00%
ZA	South Africa	4	2	2	50.00%
Totals		55	12	12	21.82%





EUROPEAN  
COMMISSION

Community research

Country	Number of Coordinators (Submitted Proposals)	Number of Coordinators (Proposals Retained for Funding)	Success Rate (%)
AT Austria	27	3	11.11%
BE Belgium	4	0	0.00%
BG Bulgaria	6	0	0.00%
CY Cyprus	5	1	20.00%
CZ Czech Republic	6	0	0.00%
DE Germany	58	9	15.52%
DK Denmark	21	4	19.05%
EE Estonia	6	0	0.00%
ES Spain	100	17	17.00%
FI Finland	6	1	16.67%
FR France	40	3	7.50%
GR Greece	39	3	7.69%
HU Hungary	15	3	20.00%
IE Ireland	9	3	33.33%
IT Italy	81	8	9.88%
LT Lithuania	6	2	33.33%
LV Latvia	3	0	0.00%
MT Malta	6	0	0.00%
NL Netherlands	16	2	12.50%
PL Poland	17	1	5.88%
PT Portugal	16	1	6.25%
RO Romania	5	2	40.00%
SE Sweden	14	0	0.00%
SI Slovenia	15	0	0.00%
SK Slovakia	1	0	0.00%
UK United Kingdom	96	22	22.92%
<b>Totals</b>	<b>618</b>	<b>85</b>	<b>13.75%</b>

## Proposal Coordinators by Country (Member States)





EUROPEAN  
COMMISSION

Community research

## Proposal Coordinators by Country (Associated Countries)

Country		Number of Coordinators (Submitted Proposals)	Number of Coordinators (Proposals Retained for Funding)	Success Rate (%)
CH	Switzerland	9	2	22.22%
HR	Croatia	2	1	50.00%
IL	Israel	1	0	0.00%
IS	Iceland	1	0	0.00%
MK	Former Yugoslavian Republic of Macedonia	1	0	0.00%
NO	Norway	33	9	27.27%
RS	Serbia	2	0	0.00%
TR	Turkey	6	1	16.67%
Totals		55	13	23.64%





EUROPEAN  
COMMISSION

Community research

# Proposal Coordinators -Gender

## Gender of proposal co-ordinators in evaluated proposals and in the main list

Female					Male				
Evaluated Proposals		Main List		Success rate	Evaluated Proposals		Main List		Success rate
Total	%	Total	%	%	Total	%	Total	%	%
139	100%	18	100%	12,9%	524	100%	80	100%	15,3%





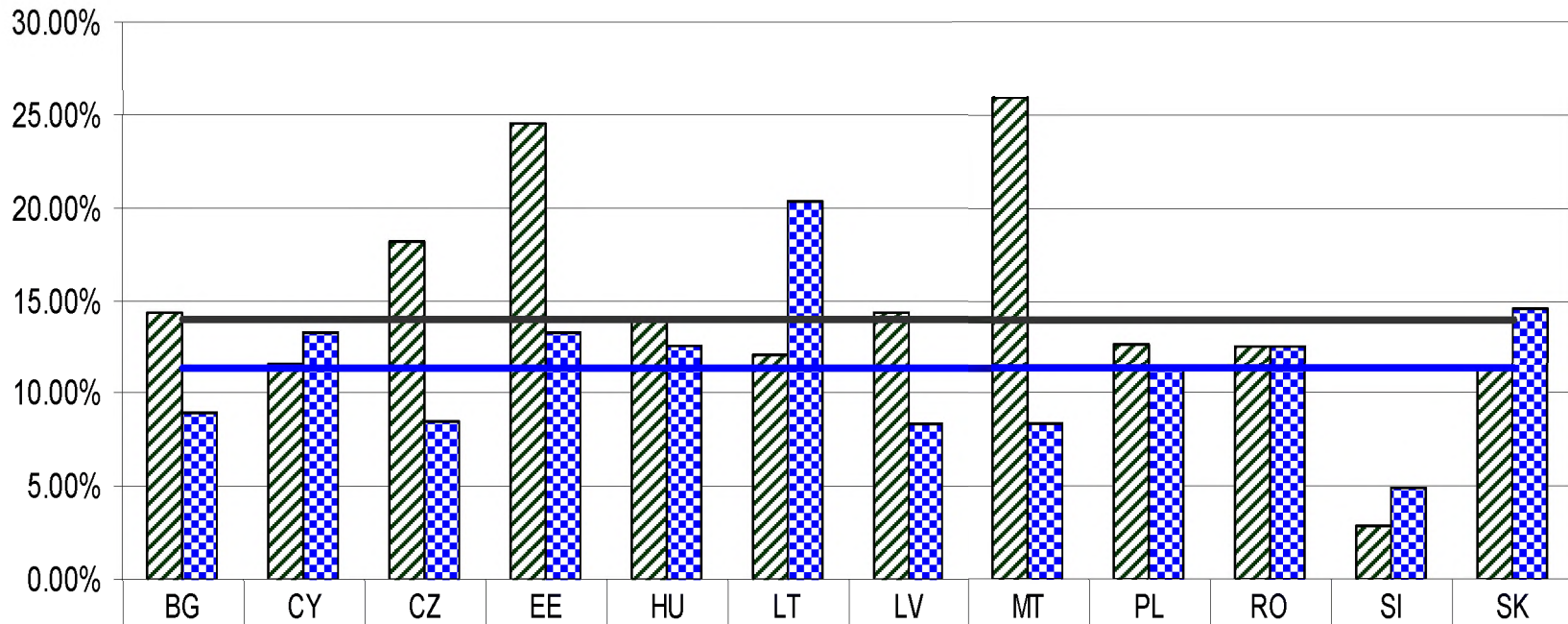
EUROPEAN COMMISSION

Community research

# SUCCESS RATES BY COUNTRY

## EU - 12

### (FP7 SME Calls)



	BG	CY	CZ	EE	HU	LT	LV	MT	PL	RO	SI	SK
FP7-SME-2007-1	14.29%	11.63%	18.18%	24.53%	13.83%	12.12%	14.29%	25.93%	12.64%	12.50%	2.82%	11.43%
FP7-SME-2008-1	8.99%	13.24%	8.43%	13.24%	12.50%	20.37%	8.33%	8.33%	11.48%	12.50%	4.88%	14.63%
Average (SME-2007-1)	13.98%	13.98%	13.98%	13.98%	13.98%	13.98%	13.98%	13.98%	13.98%	13.98%	13.98%	13.98%
Average (SME-2008-1)	11.33%	11.33%	11.33%	11.33%	11.33%	11.33%	11.33%	11.33%	11.33%	11.33%	11.33%	11.33%

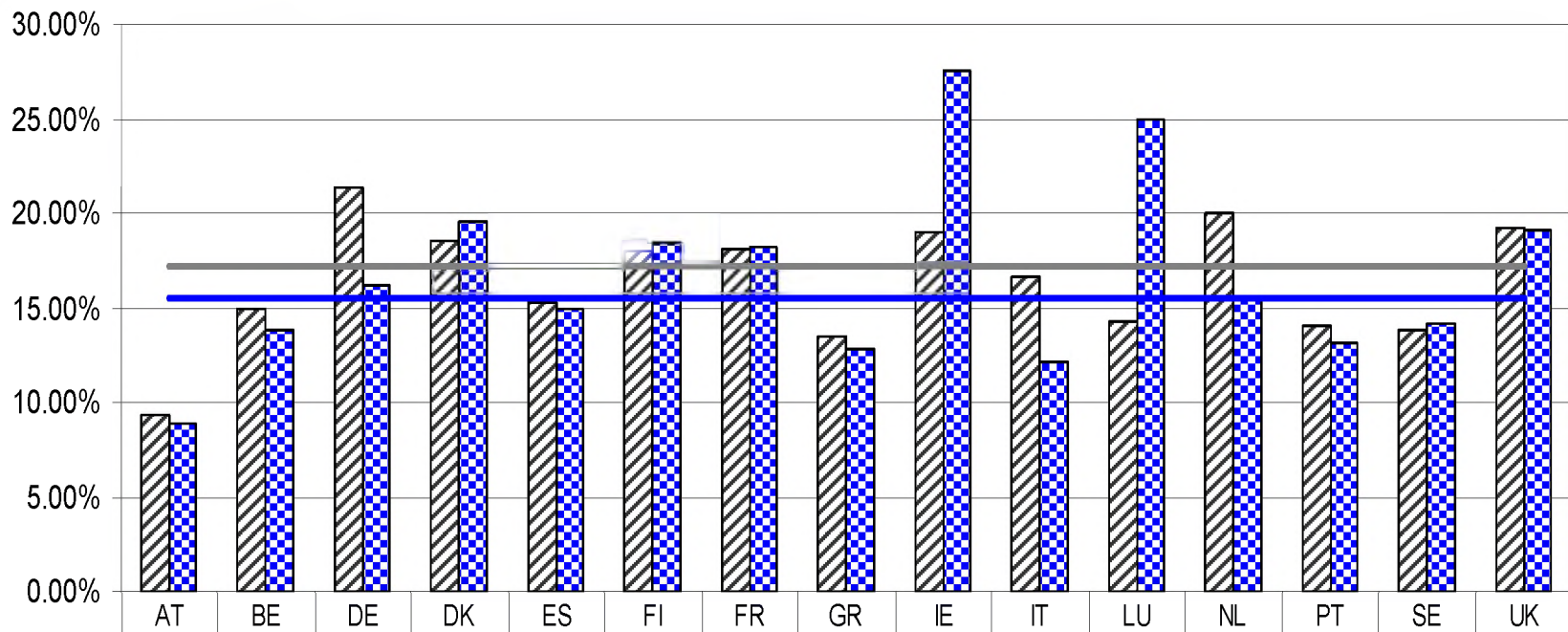




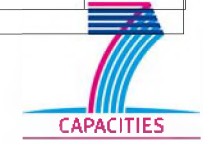
EUROPEAN COMMISSION

Community research

# Success Rates by Country EU - 15 (FP7 SME Calls)



FP7-SME-2007-1	9.38%	14.89%	21.31%	18.55%	15.24%	18.03%	18.06%	13.47%	18.99%	16.67%	14.29%	20.00%	14.02%	13.87%	19.18%
FP7-SME-2008-1	8.93%	13.86%	16.18%	19.51%	14.89%	18.46%	18.18%	12.82%	27.54%	12.14%	25.00%	15.58%	13.19%	14.18%	19.12%
Average (SME-2007-1)	17.20%	17.20%	17.20%	17.20%	17.20%	17.20%	17.20%	17.20%	17.20%	17.20%	17.20%	17.20%	17.20%	17.20%	17.20%
Average (SME-2008-1)	15.54%	15.54%	15.54%	15.54%	15.54%	15.54%	15.54%	15.54%	15.54%	15.54%	15.54%	15.54%	15.54%	15.54%	15.54%

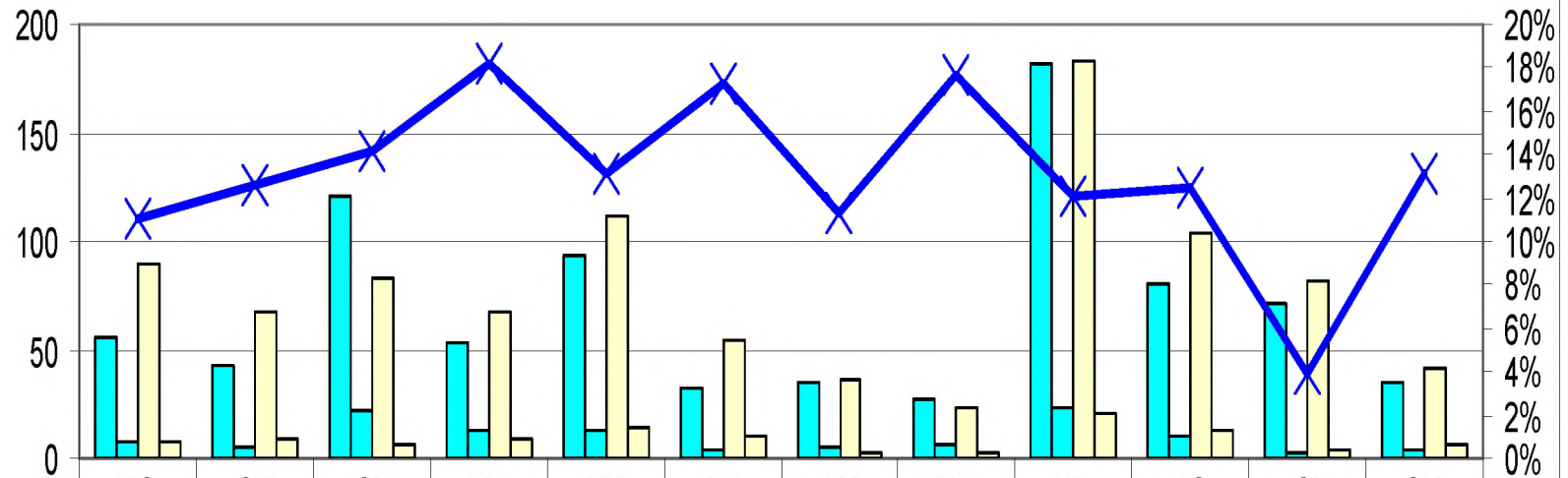




EUROPEAN  
COMMISSION

Community research

## Number of Participants by Country in Submitted and Retained for Funding Proposals and Success Rate (EU - 12)



FP7-SME-2007-1 (a)

BG

FP7-SME-2007-1 (b)

8

FP7-SME-2008-1 (a)

89

FP7-SME-2008-1 (b)

8

Success Rate

11.03%

CY

43

5

68

9

12.61%

CZ

121

22

83

7

14.22%

EE

53

13

68

9

18.18%

HU

94

13

112

14

13.11%

LT

33

4

54

11

17.24%

LV

35

5

36

3

11.27%

MT

27

7

24

2

17.65%

PL

182

23

183

21

12.05%

RO

80

10

104

13

12.50%

SI

71

2

82

4

3.92%

SK

35

4

41

6

13.16%

(a) : Submitted Proposals

(b) : Proposals Retained for funding

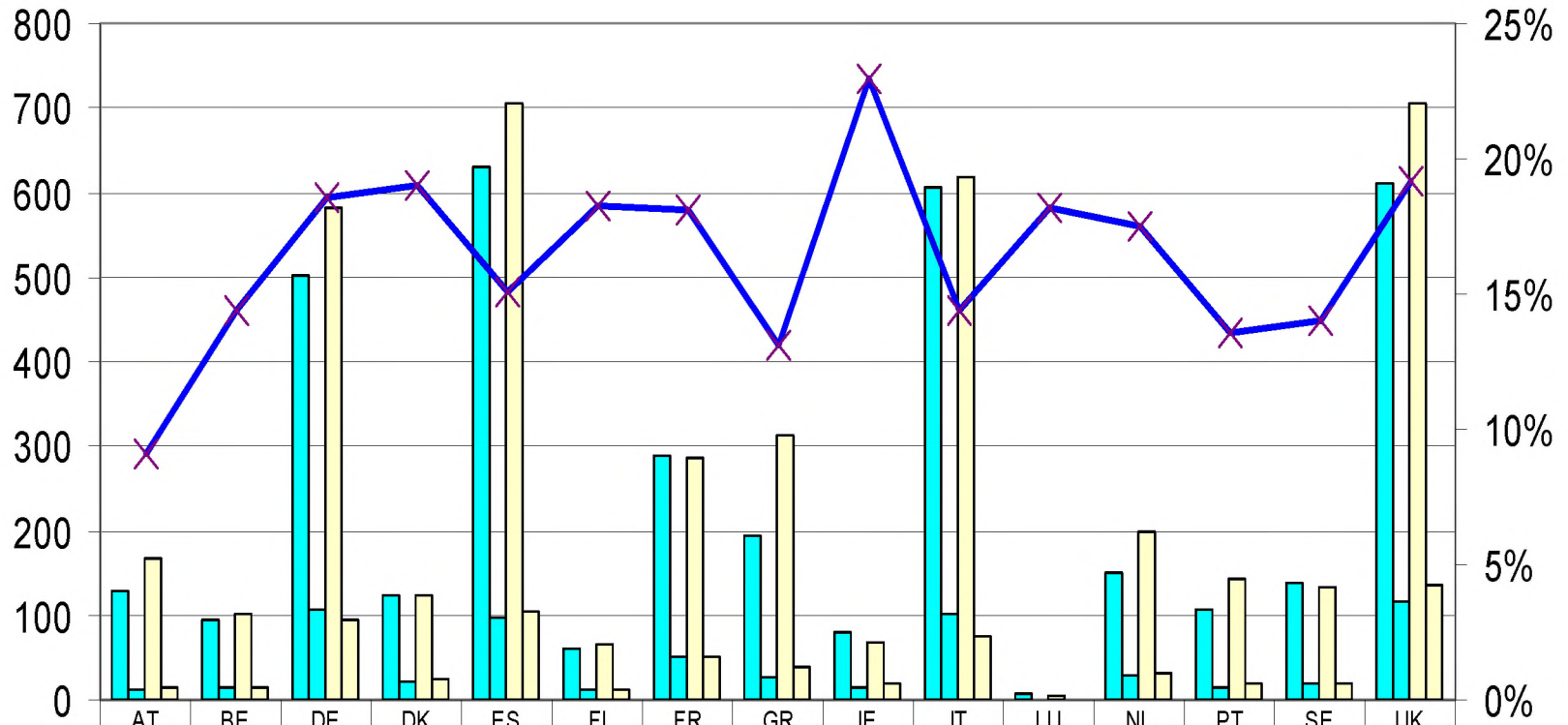




EUROPEAN COMMISSION

Community research

### Number of Participants by Country in proposals Submitted and Retained for Funding and Success Rate (EU-15)



FP7-SME-2007-1 (a)	128	94	502	124	630	61	288	193	79	606	7	150	107	137	610
FP7-SME-2007-1 (b)	12	14	107	23	96	11	52	26	15	101	1	30	15	19	117
FP7-SME-2008-1 (a)	168	101	581	123	705	65	286	312	69	618	4	199	144	134	706
FP7-SME-2008-1 (b)	15	14	94	24	105	12	52	40	19	75	1	31	19	19	135
Success Rate	9.12%	14.36%	18.56%	19.03%	15.06%	18.25%	18.12%	13.07%	22.97%	14.38%	18.18%	17.48%	13.55%	14.02%	19.15%

(a) : Submitted Proposals  
(b) : Proposals Retained for funding



CAPACITIES



Community research

# Field of the proposal

Description	Num. of Proposals (Eligible Proposals)	Num. of Proposals (Main List)	Success Rate
Aeronautics / Aerospace	8	0	0.0%
Agriculture / Forestry	31	8	25.8%
Aquaculture / Fisheries / Marine Technologies	31	5	16.1%
Biotechnologies / Genomics	20	2	10.0%
Chemical / Petrochemical	19	4	21.1%
Construction / Building	42	6	14.3%
Electronics / Electrical Industry	19	2	10.5%
Energy	37	6	16.2%
Environment / Waste	44	13	29.6%
Food	50	8	16.0%
Health care	43	6	14.0%
Information and Communication Technologies	97	9	9.3%
Machinery / Instruments / Sensors	55	13	23.6%
Management Sciences	2	0	0.0%
Materials processing	48	3	6.3%
Measurements / Testing	20	1	5.0%
Medical / Biomedical equipment	40	3	7.5%
Nanotechnologies	5	0	0.0%
Security	10	4	40.0%
Textile / Leather / Wood	15	2	13.3%
Transport	27	3	11.1%
<b>Totals</b>	<b>663</b>	<b>98</b>	<b>14.8%</b>



CAPACITIES





EUROPEAN  
COMMISSION

Community research

## Average Proposal Costs (Main List)

Total Costs	Subcontracted to RTDP	RTD Costs	DEMO Costs	Management Costs	Other Costs	Requested Grant
€1,404,725	€937,852	€1,156,740	€82,541	€83,701	€81,642	€1,027,837
100.00%	66.76%	82.4%	5.9%	6.0%	5.8%	73.2%

- Size of the Consortium:
  - Average: 9 partners/proposal

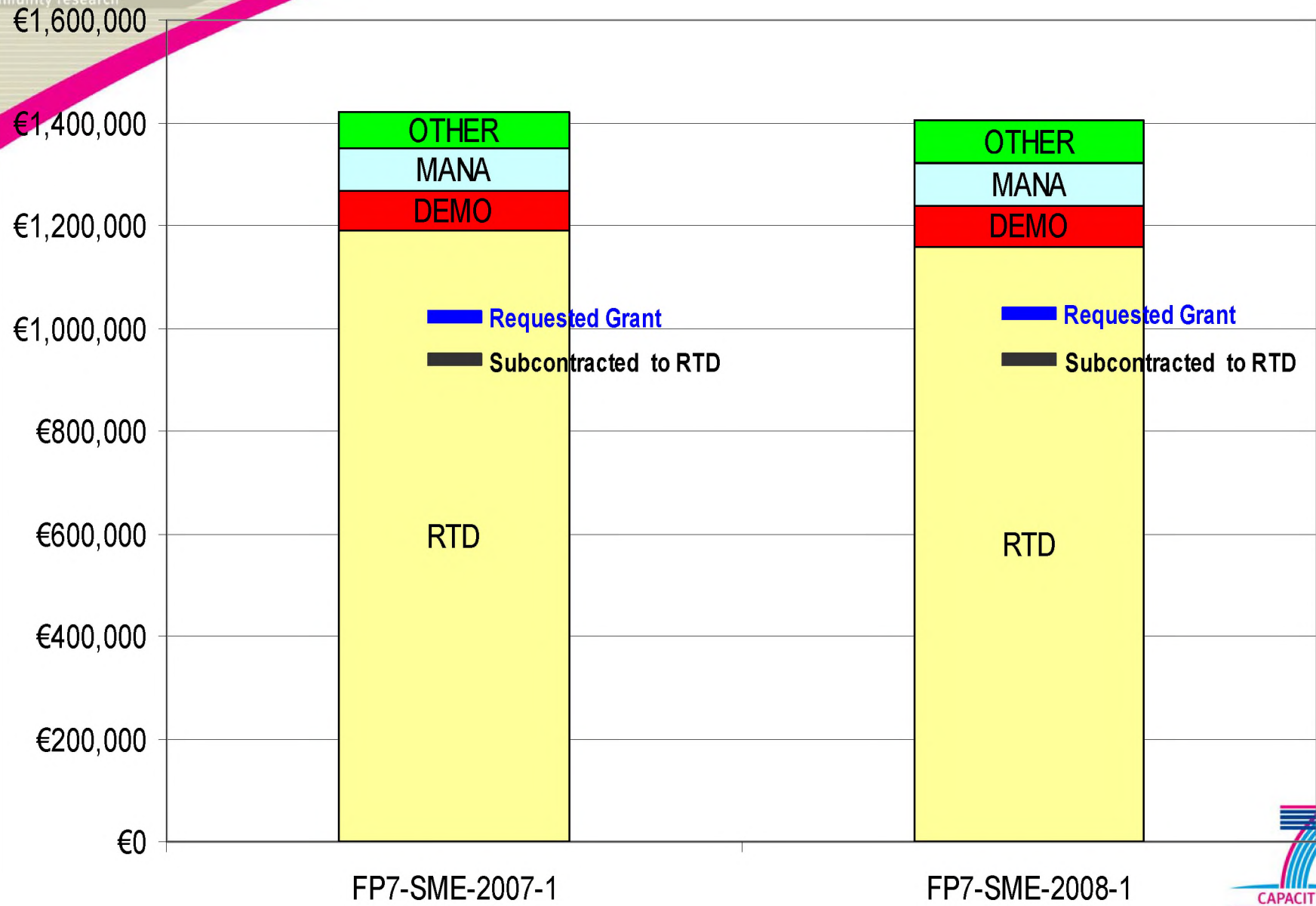




EUROPEAN  
COMMISSION

Community research

# Average Proposal Costs (Main List)





EUROPEAN  
COMMISSION

Community research

# Negotiation - Schedule

Time

30/06/2008 : Initial Information letters (ESR)  
sent to Proposal Coordinators

02/07/2008 : Quick Call Info

10/07/2008 : Evaluation Report

27/08/2008 : Negotiation letters

22/09/2008 : Project Coordinators meeting

30/09/2008 : Deadline DoW

31/01/2009: First Grant Agreements

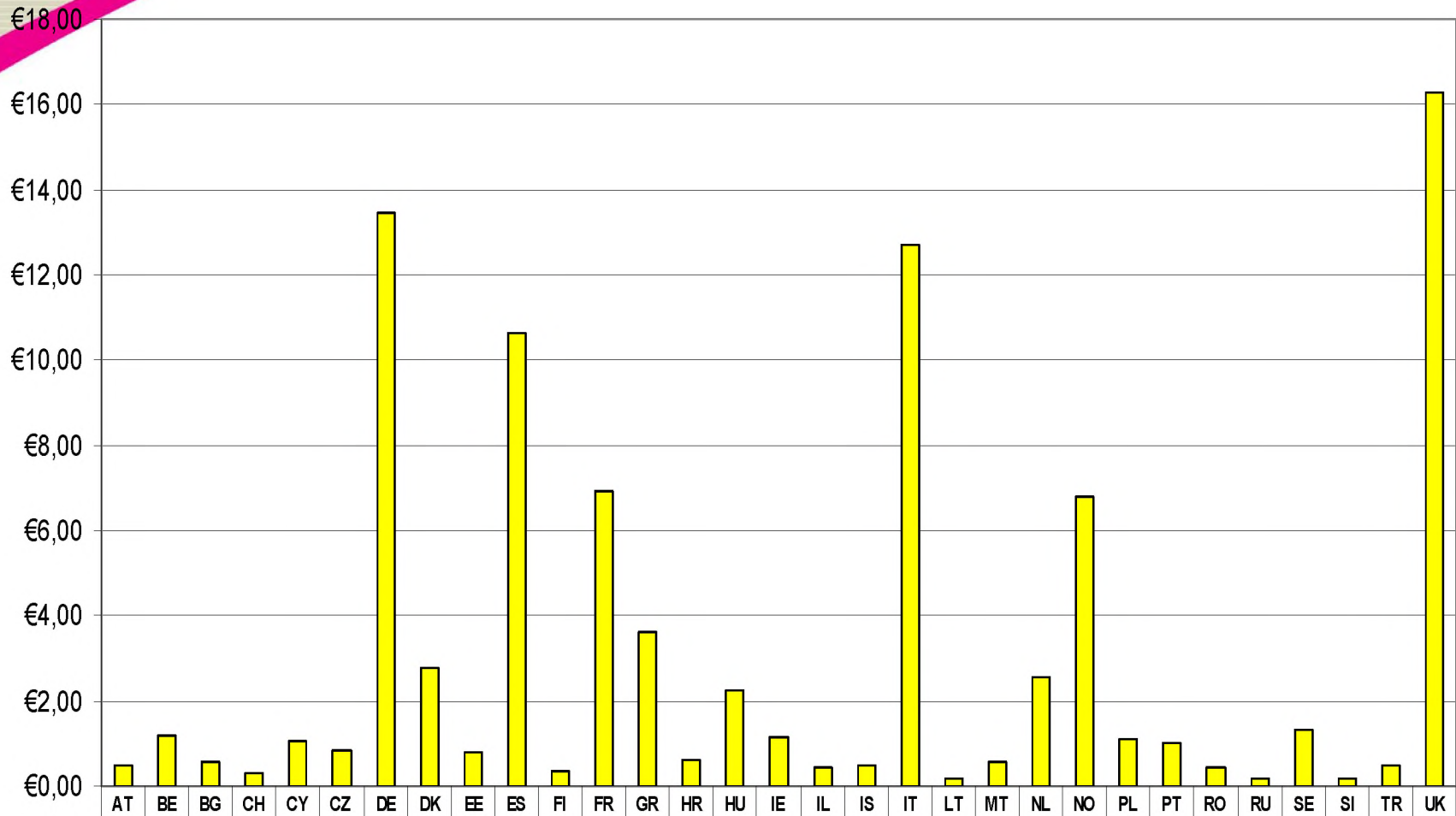




EUROPEAN COMMISSION

Community research

### Outsourced Research Budget by Country (in € Million)



■ Subcontracting (Million) €0,49 €1,19 €0,59 €0,30 €1,07 €0,85 €13,4 €2,77 €0,79 €10,6 €0,36 €6,92 €3,64 €0,60 €2,23 €1,16 €0,45 €0,47 €12,6 €0,18 €0,57 €2,55 €6,81 €1,12 €1,01 €0,43 €0,18 €1,32 €0,16 €0,50 €16,2

